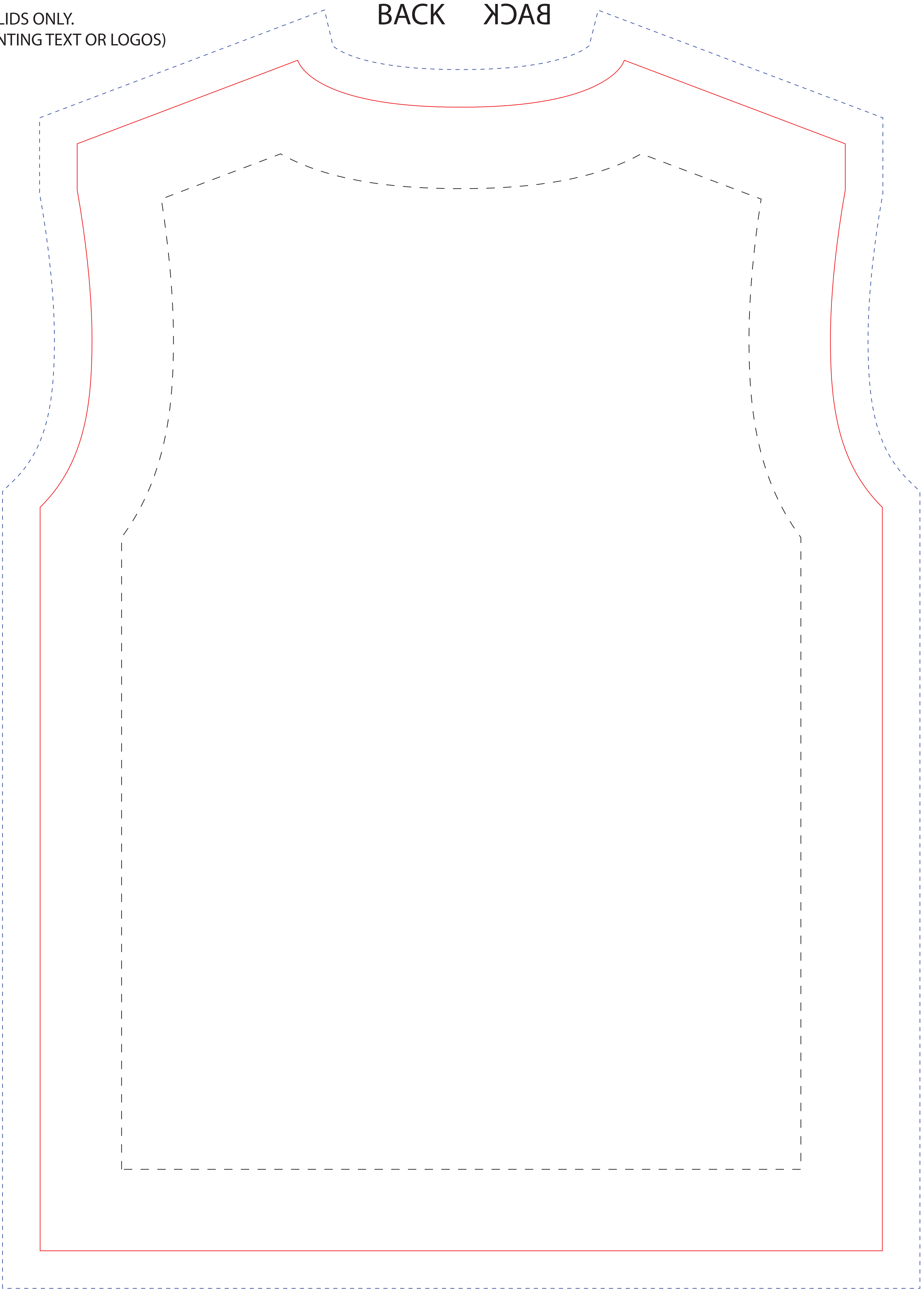
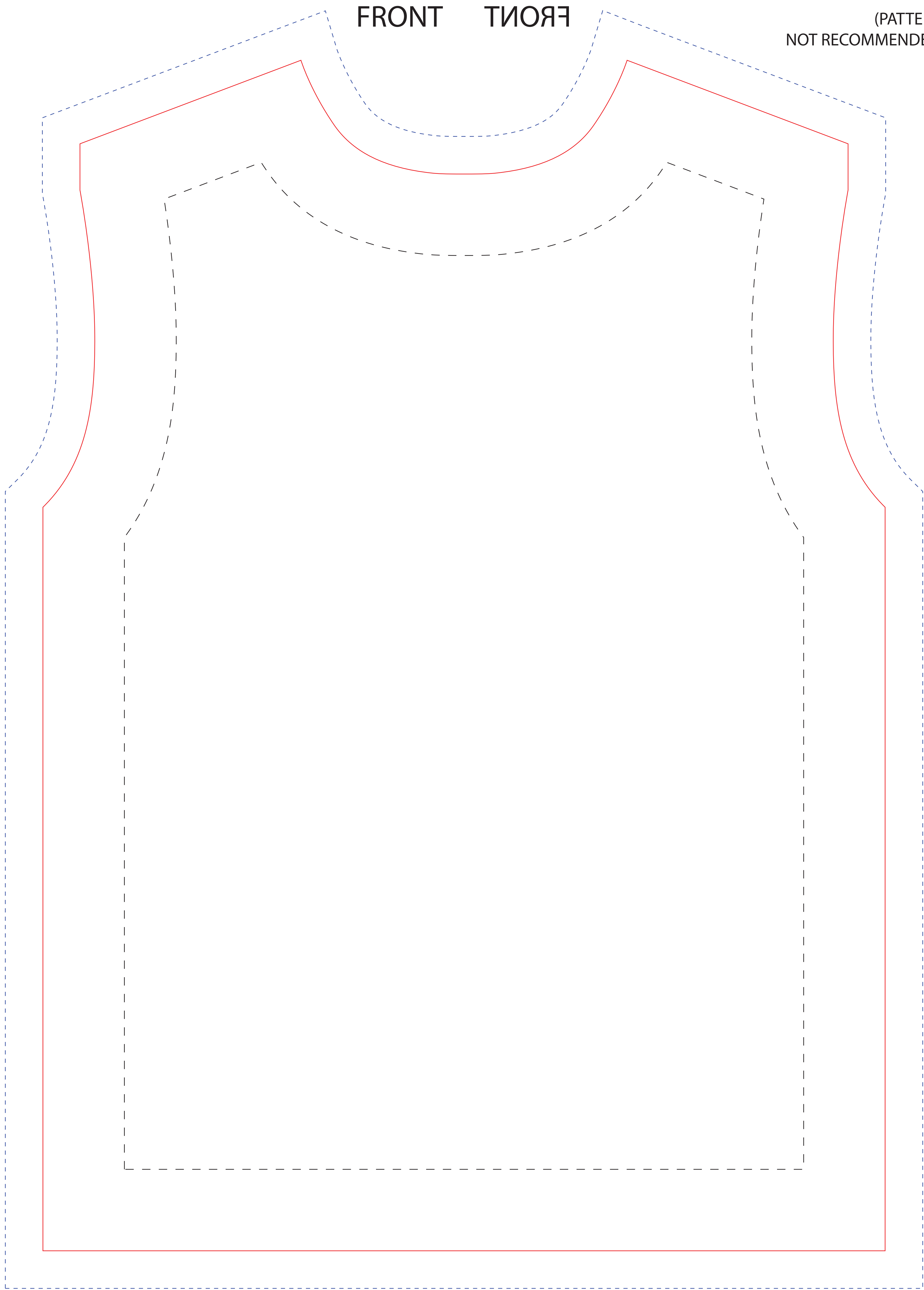


COLLAR FRONT
(PATTERNS OR SOLIDS ONLY.
NOT RECOMMENDED FOR PRINTING TEXT OR LOGOS)

FRONT FRONT

BACK BACK



TOP (SHOULDER)
LEFT SLEEVE LEFT SLEEVE

TOP (SHOULDER)
RIGHT SLEEVE RIGHT SLEEVE

FRONT
FRONT

BACK
BACK

BACK
BACK

FRONT
FRONT

CENTER

CENTER

SHORTSLEEVE SUBLIMATED TEE Size: YOUTH SMALL

Shirt Imprint Area
16.8"W x 23.75"H
Does not include Bleed

- Imprint Area
(Please keep graphics within this line)
- Product Line
(Product Edge)
- Bleed Line
(Please bleed graphics to this line)

- FILE SAVING GUIDE:**
- All text and type must be converted to outlines.
 - Extend art to bleed line if design calls for bleed.
 - Remove all guides and additional template information before saving.
 - Please embed or send art files that have been placed into the art.
 - Please supply PMS colors if color matching is needed.
 - Save file as PDF, AI, or EPS at 300 dpi (highest resolution).