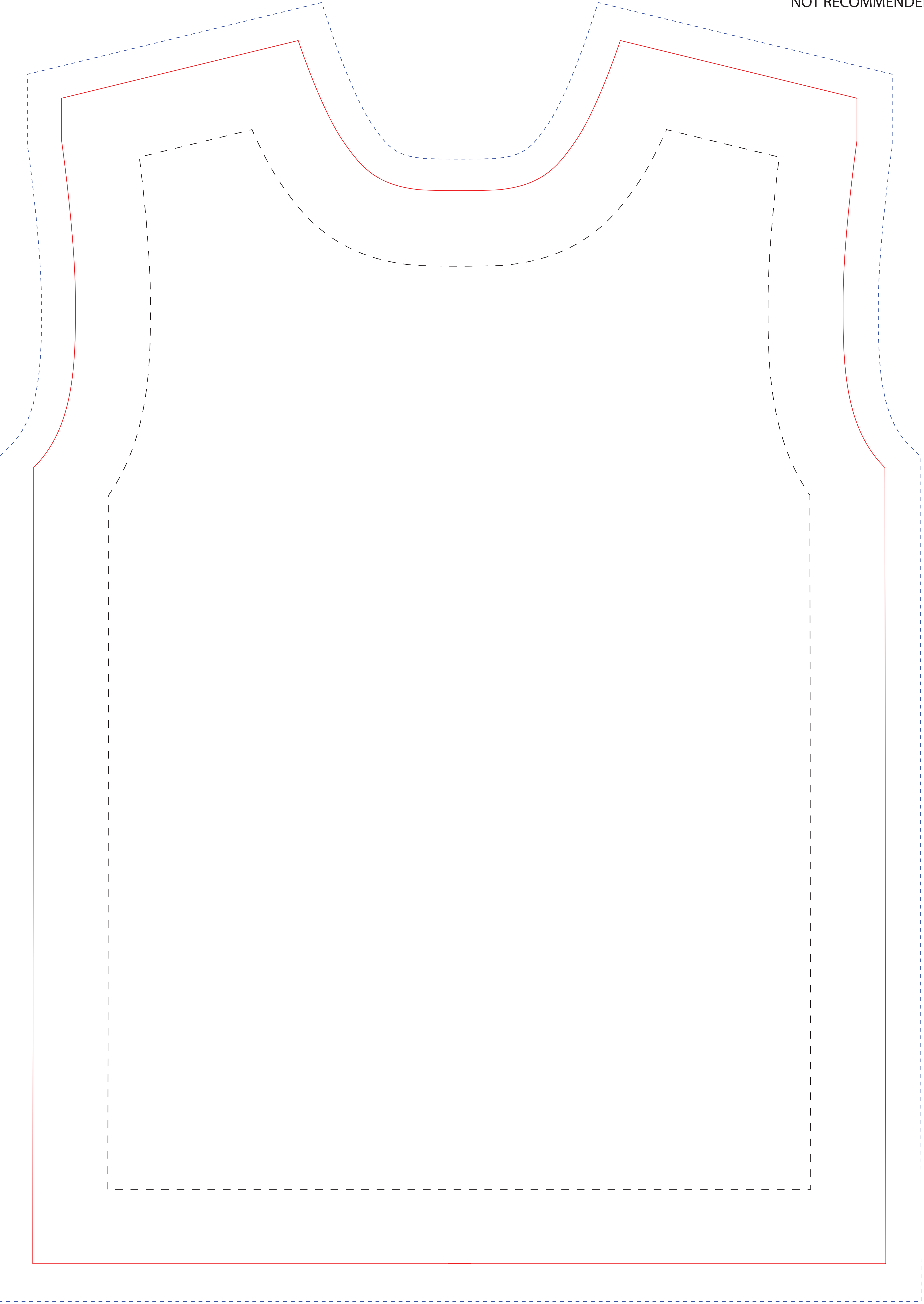


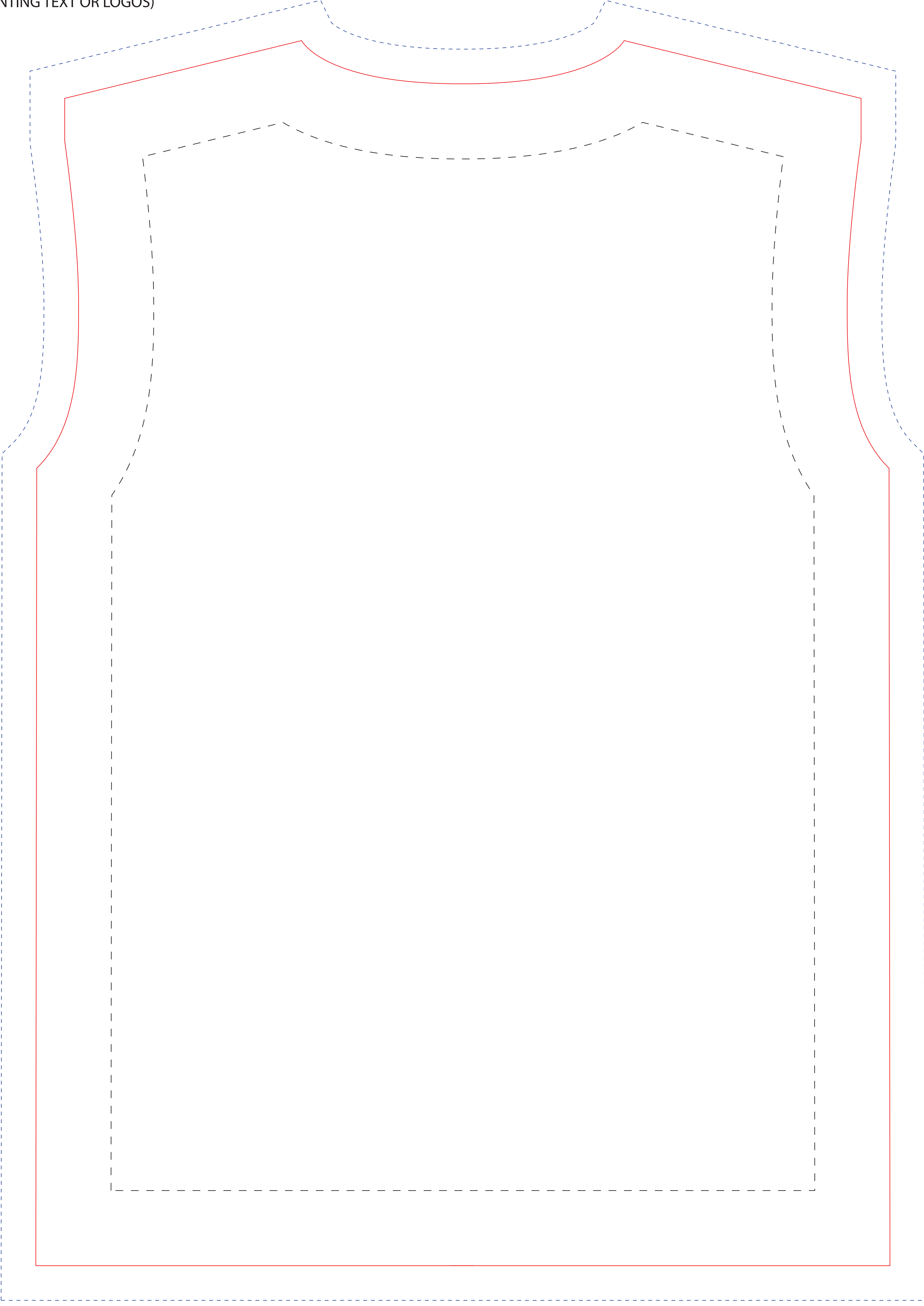


COLLAR (PATTERNS OR SOLIDS ONLY.
NOT RECOMMENDED FOR PRINTING TEXT OR LOGOS)

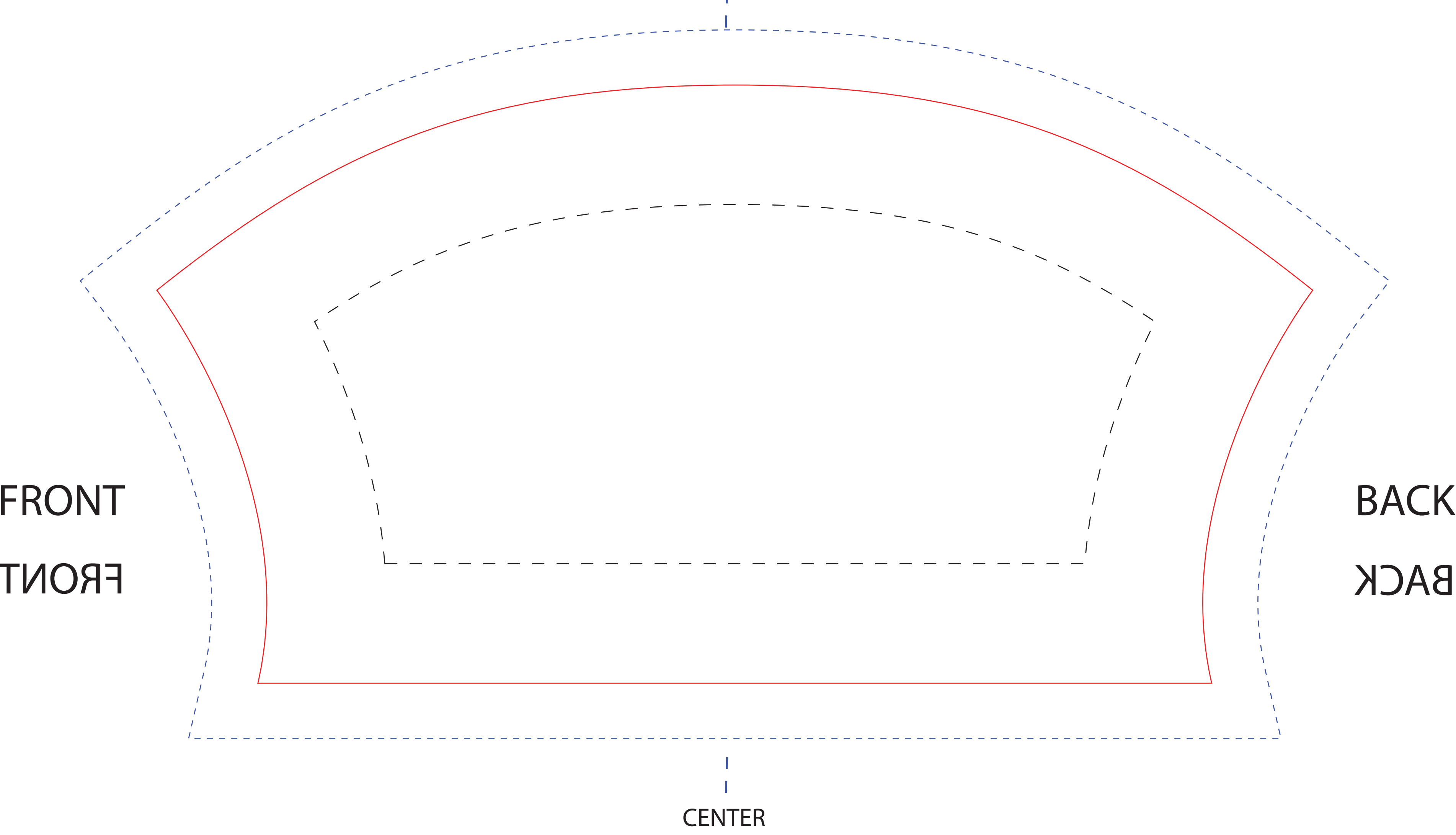
FRONT



BACK

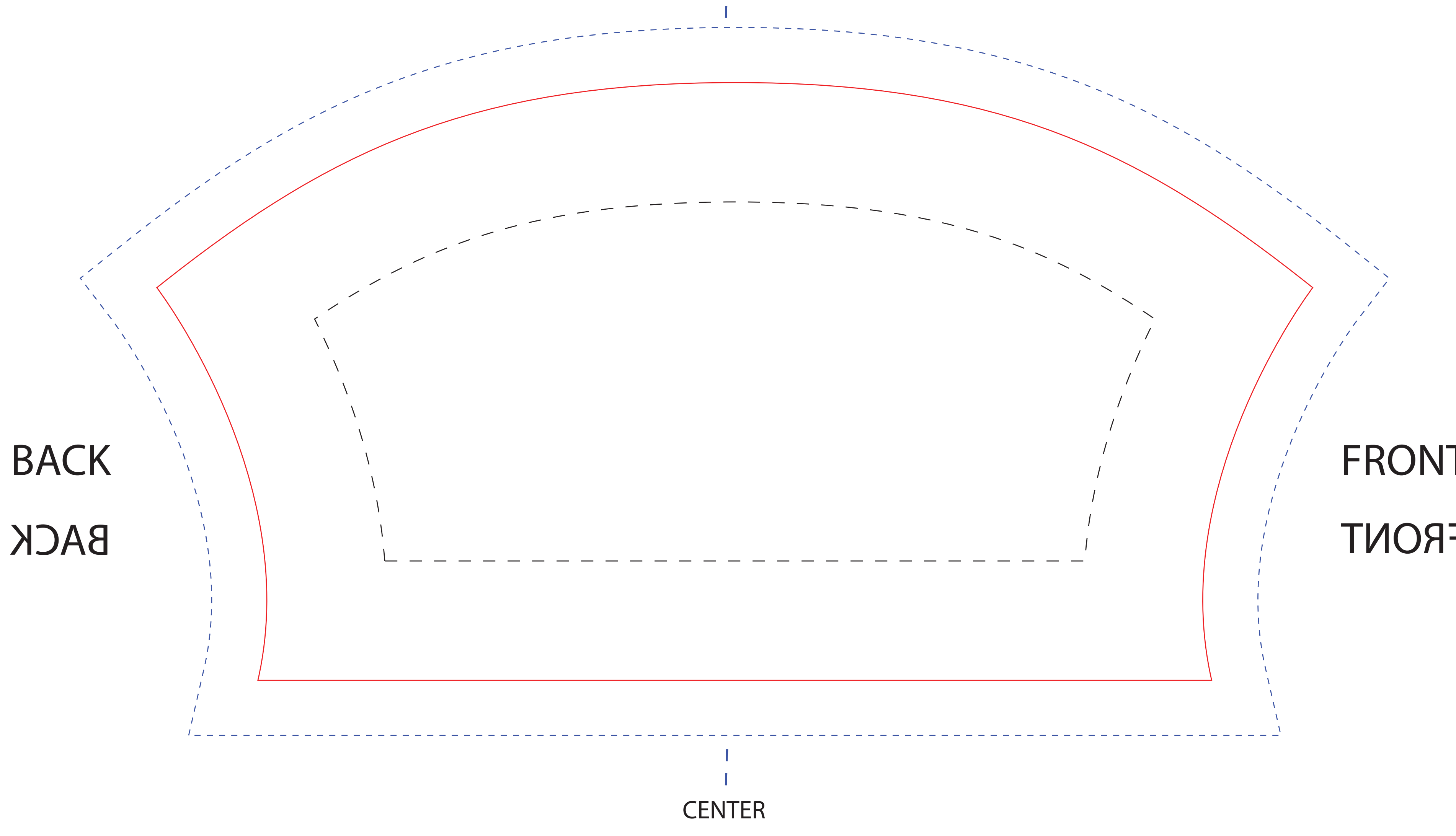


TOP (SHOULDER)
LEFT SLEEVE



CENTER

TOP (SHOULDER)
RIGHT SLEEVE



CENTER

SHORT SLEEVE SUBLIMATED TEE Size: YOUTH LARGE

Shirt Imprint Area
18.48"W x 26.5"H
Does not include Bleed

- Imprint Area
(Please keep graphics within this line)
- Product Line
(Product Edge)
- Bleed Line
(Please bleed graphics to this line)

- FILE SAVING GUIDE:**
- All text and type must be converted to outlines.
 - Extend art to bleed line if design calls for bleed.
 - Remove all guides and additional template information before saving.
 - Please embed or send art files that have been placed into the art.
 - Please supply PMS colors if color matching is needed.
 - Save file as PDF, AI, or EPS at 300 dpi (highest resolution).